





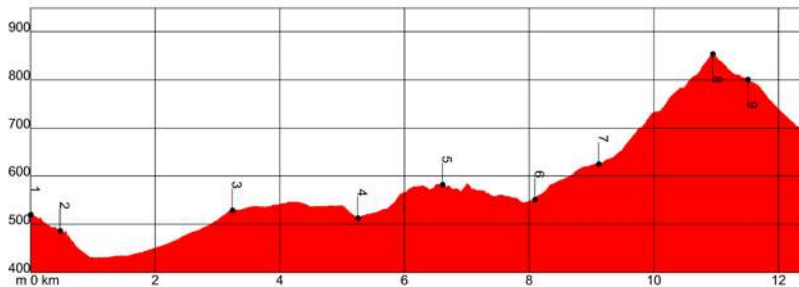



Teba (W) (520m)  Cañete la Real (NE) (695 m) 

12.5 km  4 h 00 min.  500 m  325 m  Linear  
 On foot    6.4 km  5.3 km  0.8 km 

Environment hazards  **1** **2** **3** **4** **5** Underfoot Conditions  **1** **2** **3** **4** **5**
 Navigation  **1** **2** **3** **4** **5** Physical Effort  **1** **2** **3** **4** **5**



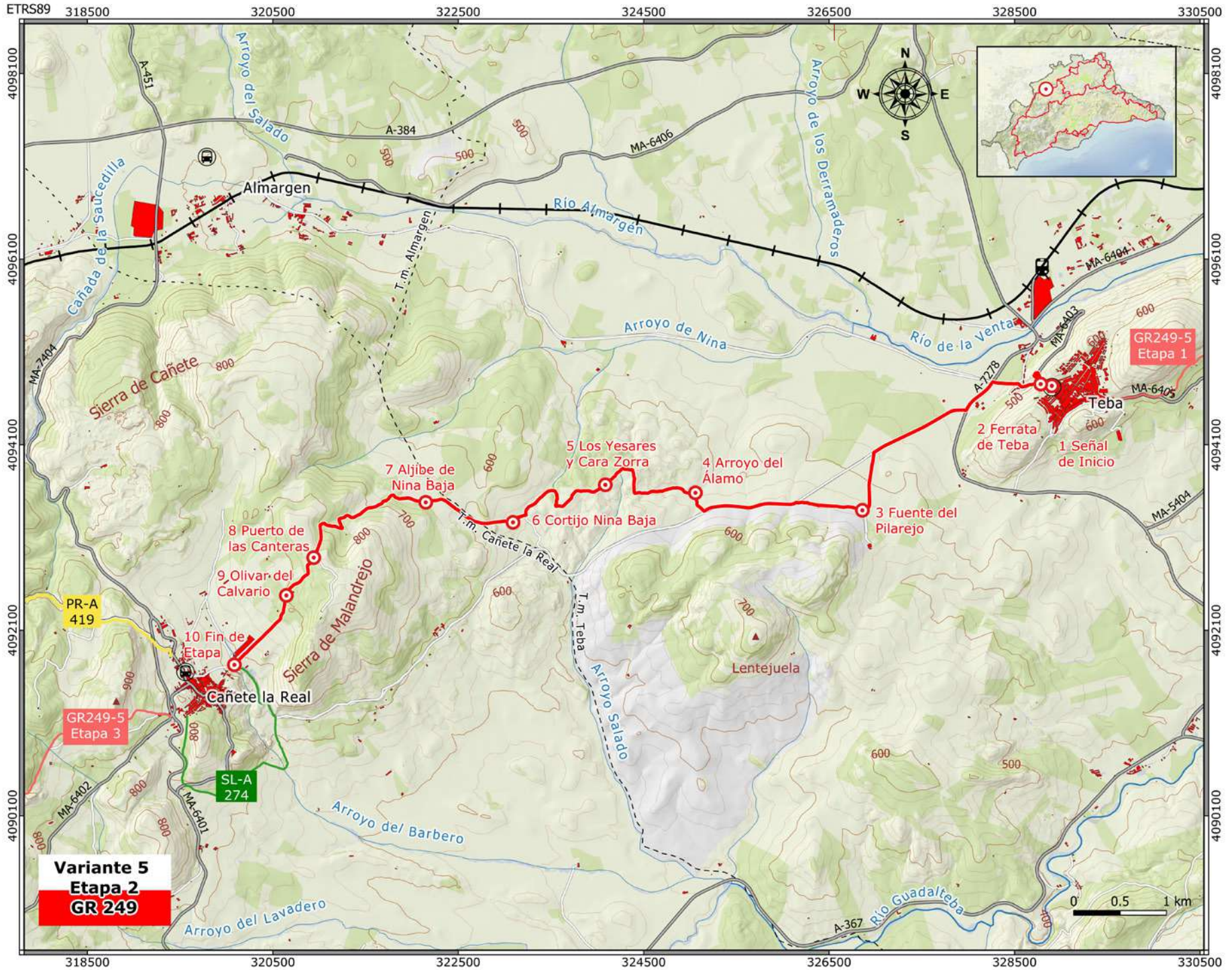


- Road traffic circulating on roads and main track
- Fording the La Fuente del Álamo
- Crossing farmland

SL-A 274 Cerro de Sabora Hill, link up at the end of the Stage and
PR-A 419 Las Carboneras

P O I N T	X	Y	HEIGHT ABOVE SL	DISTANCE
1.Start point	328900 /	4094735 /	520 m	Km 0,0
2.Teba Via ferrata	328780 /	4094755 /	485 m	Km 0,5
3.El Pilarejo spring	326860 /	4093395 /	530 m	Km 3,2
4.El Álamo stream	325055 /	4093580 /	515 m	Km 5,2
5.Los Yesares and Cara Zorra ways	324085 /	4093670 /	580 m	Km 6,6
6.Nina Baja estate	323090 /	4093265 /	550 m	Km 8,1
7.Nina Alta well	322150 /	4093480 /	625 m	Km 9,1
8.Las Canteras pass	320940 /	4092885 /	855 m	Km 10,9
9.El Calvario olive grove	320645 /	4092475 /	800 m	Km 11,4
10.End point	320085 /	4091730 /	695 m	Km 12,5

ALT. ROUTE 249.5-2



Variante 5
Etapa 2
GR 249

GR249-5
Etapa 1

GR249-5
Etapa 3

SL-A
274

PR-A
419