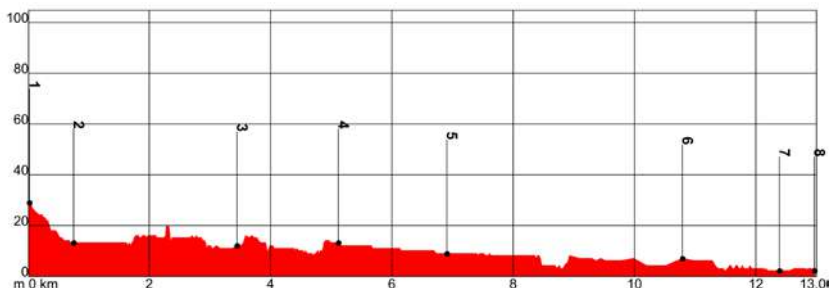


35. ALHAURÍN DE LA TORRE • MÁLAGA

Zapata (SW) (23m) Alhaurín de la Torre  Málaga (S) (0 m) 

12.9 km  2 h 35 min.  10 m  30 m  Linear  
 On foot    1.3 km  11.2 km  0.4 km 

Environment hazards  **1** **2** **3** **4** **5** Underfoot Conditions  **1** **2** **3** **4** **5**
 Navigation  **1** **2** **3** **4** **5** Physical Effort  **1** **2** **3** **4** **5**



- Road traffic circulating on tarmac roads
- Lighter vehicles circulating on the tracks

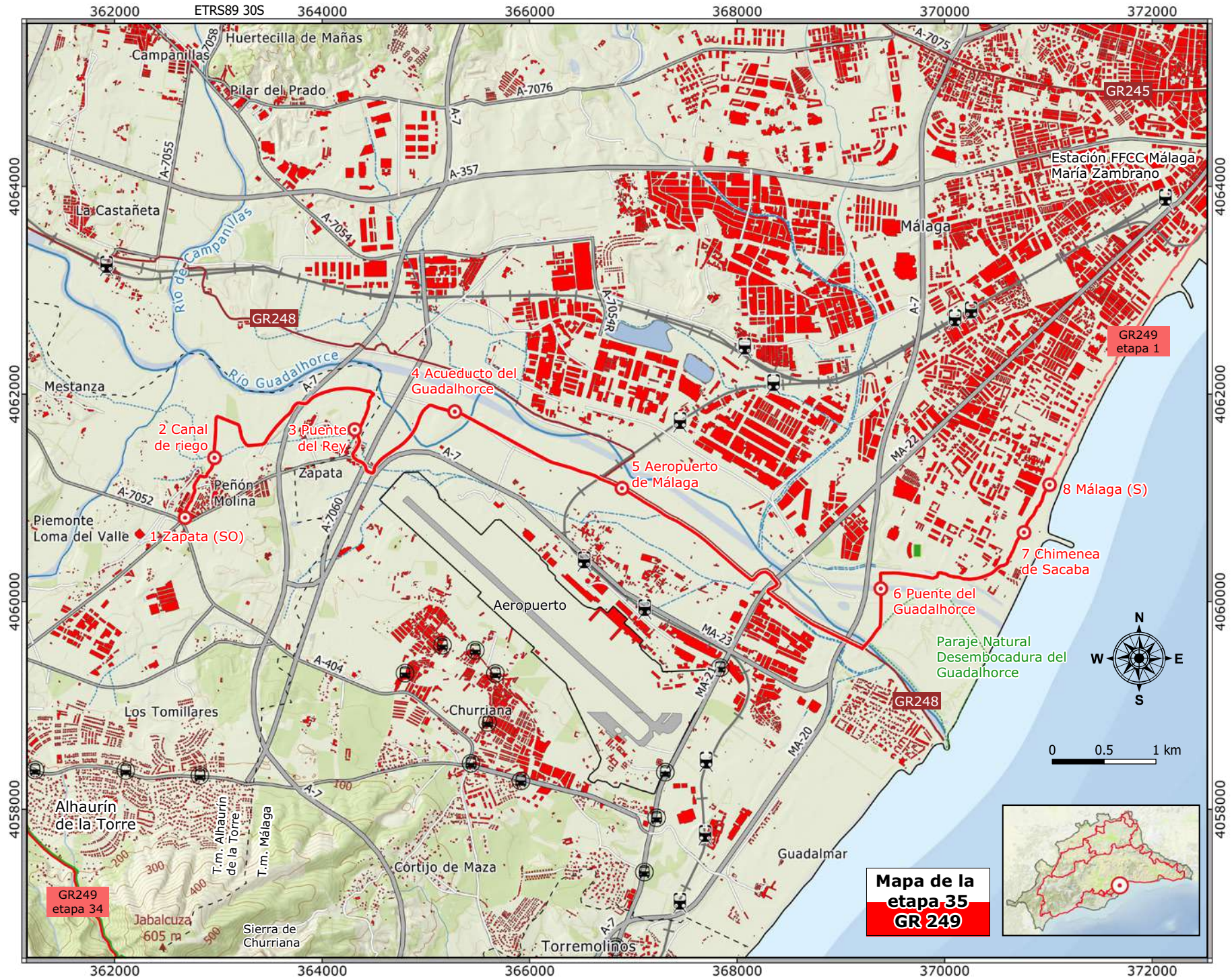
GR 248

The Guadalhorce, overlap towards the end

GR 92 E12

Coastal Path, link-up at the end

P O I N T	X	Y	HEIGHT ABOVE SL	DISTANCE
1.Zapata (SW)	362680	/ 4060810	/ 23 m	Km 0,0
2.Drainage channel	362960	/ 4061385	/ 10 m	Km 0,8
3.Puente del Rey aqueduct	364315	/ 4061655	/ 13 m	Km 3,5
4.Guadalhorce aqueduct	365280	/ 4061830	/ 11 m	Km 5,1
5.Málaga Airport	366890	/ 4061090	/ 9 m	Km 6,9
6.Guadalhorce bridge	368385	/ 4060125	/ 2 m	Km 10,8
7.Sacaba chimney	370765	/ 4060665	/ 2 m	Km 12,4
8.Málaga (S)	371010	/ 4061125	/ 2 m	Km 13,0



Mapa de la etapa 35 GR249