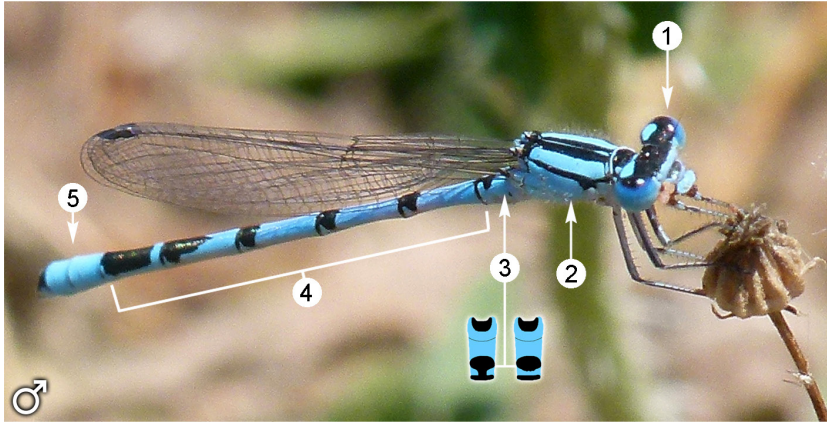


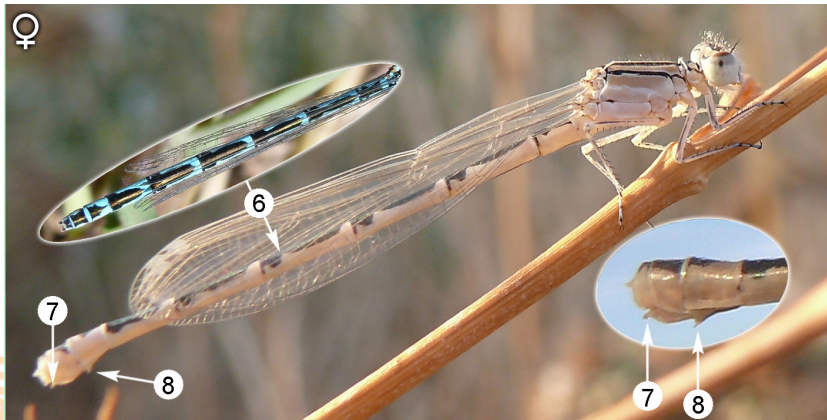


# *Enallagma cyathigerum*



Length: From 29 to 36 mm. Hindwing span: From 15 to 21 mm.

**Male:** **1.** The upper part of the eyes are black with two blue spots. **2.** Blue thorax with black stripes on the back and sides with hardly developed or no line between sutures. **3.** Marking in the shape of a mushroom on S2, sometimes incomplete. **4.** Black markings which gradually become shorter. **5.** S8 and S9 are completely blue. **Female:** They can be blue like males or light brown. **6.** They have black spots on the abdomen in the shape of a torpedo, almost all along the segment. **7.** Egg-laying organ. **8.** Vulvar spine stands out on S8.





## HABITAT

This species lives in all kinds of stagnant bodies of water, even if they are salty, whenever they are sunny.

In Málaga, they mainly live in the pools in endorheic lakes and temporary ponds, slow running rivers, small dams, reservoirs and spillways, artificial ponds and deserted flooded quarries.

## WAY OF LIFE

They often fly nervously above flat water, like only few Zygoptera, including the genus *Erythromma*. They rest on shore plants, with their wings closed over the abdomen or slightly opened.

## WHEN TO SEE THIS SPECIES

In the province of Malaga can be seen from March to October.

Jan	Feb	Mar	Apr	May	Jun	Jul	Aug	Sep	Oct	Nov	Dec
-----	-----	-----	-----	-----	-----	-----	-----	-----	-----	-----	-----

## WHERE TO SEE THIS SPECIES

It is common but confined to certain places in the province and it lives in colonies. These damselflies can be seen on stages 18 and 19 along the Great Málaga Path at the spot where they go around Fuente de Piedra and Campillos. It could be present on other stages that go past big rivers in the province.

## SIMILAR SPECIES

Genera *Erythromma* and *Coenagrion*.

## CONSERVATION STATUS

The species is not endangered nor protected by the current environmental law.