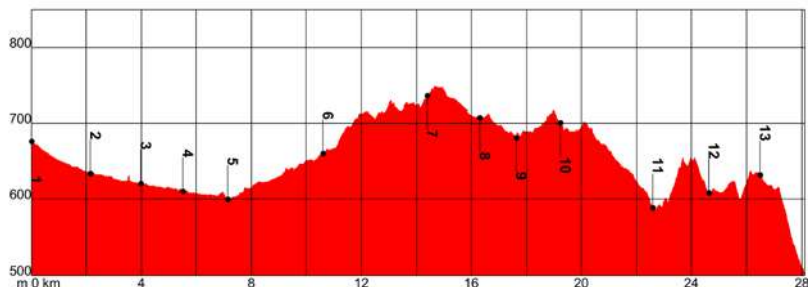




Villanueva del Rosario (S) 665 m		Antequera (E) (490 m)					
28.1 km	8 h 00 min.	350 m	535 m	Linear			
On foot			7.3 km	14.4 km	6.4 km		
Environment hazards	<b>1</b> <b>2</b> <b>3</b> <b>4</b> <b>5</b>	Underfoot Conditions	<b>1</b> <b>2</b> <b>3</b> <b>4</b> <b>5</b>	Navigation	<b>1</b> <b>2</b> <b>3</b> <b>4</b> <b>5</b>	Physical Effort	<b>1</b> <b>2</b> <b>3</b> <b>4</b> <b>5</b>



- Walking alongside the River Guadalhorce for almost 7km
- Walking alongside the A-7075 for roughly 600 metres
- Road traffic circulating on the tracks

GR 249

GR 248

Detour

GR 7 - E4

SL-A 22

Stage 12 of the Great Malaga Path, overlap until km 2

the Guadalhorce Great Path, overlap until km 6.5

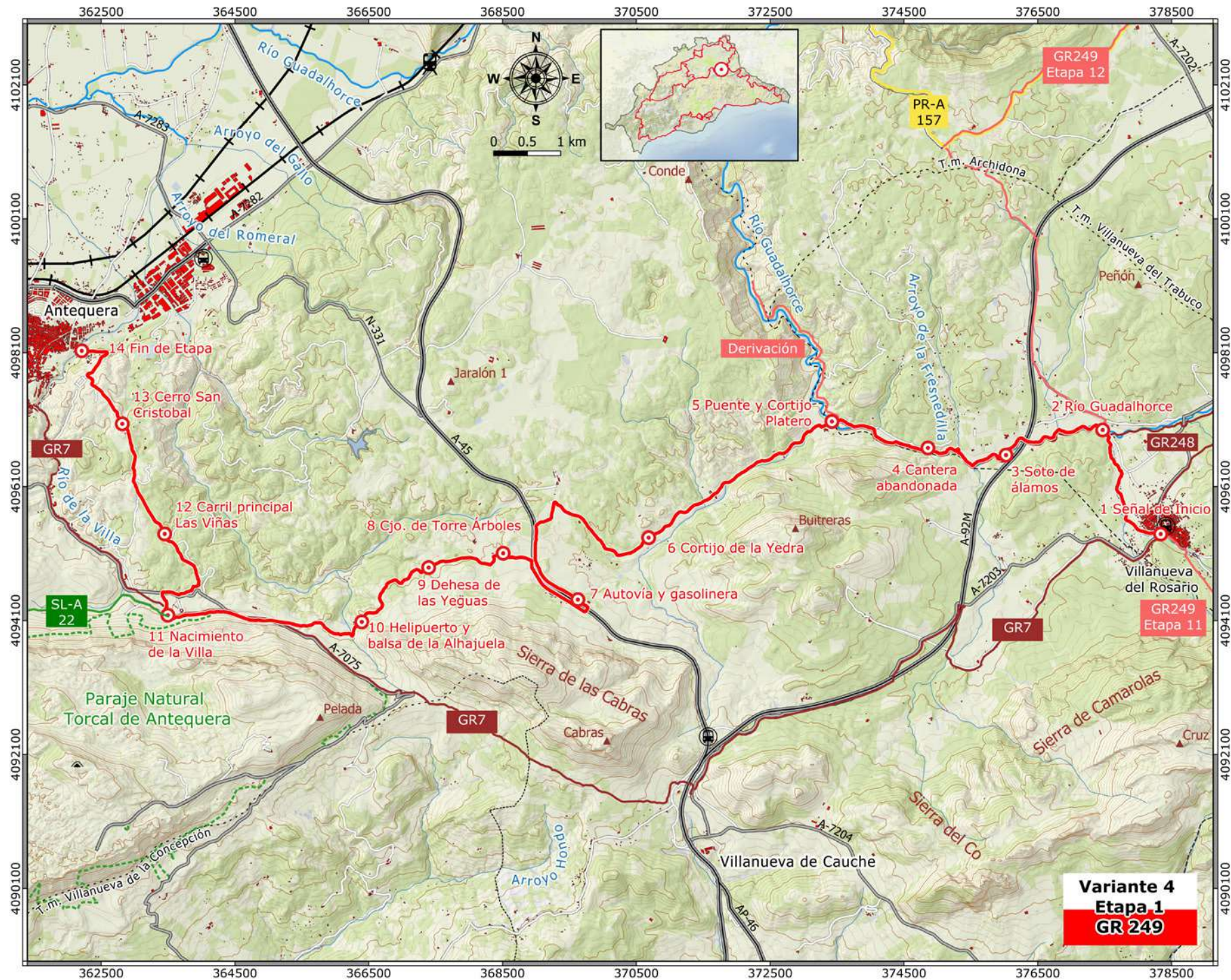
optional detour to the Wildlife Observation spot at km 6.5

Tarifa – Athens, overlap between km 21.3 and 22.4

La Escaleruela, partial overlap at km 22.4

P O I N T	X	Y	HEIGHT ABOVE SL	DISTANCE
1.Start point in Villanueva del Rosario	378335	/ 4095390	/ 675 m	Km 0,0
2.River Guadalhorce	377470	/ 4096945	/ 635 m	Km 2,2
3.Poplar grove	376025	/ 4096570	/ 620 m	Km 4,0
4.Abandoned quarry	374860	/ 4096680	/ 620 m	Km 5,5
5.Bridge and Country estate of El Platero	373420	/ 4097075	/ 600 m	Km 7,1
6.La Yedra estate	370685	/ 4095340	/ 660 m	Km 10,5
7.Motorway and service station	369625	/ 4094415	/ 735 m	Km 14,4
8.Torre Arboles estate	368510	/ 4095105	/ 705 m	Km 16,3
9.Dehesa Las Yeguas	367395	/ 4094890	/ 680 m	Km 17,6
10.Heliport and Pools at La Alhajueta	366395	/ 4094080	/ 700 m	Km 19,2
11.Nacimiento de la Villa spring	363495	/ 4094180	/ 590 m	Km 23,0
12.Las Villas track	363450	/ 4095395	/ 610 m	Km 25,0
13.San Cristobal hill	362815	/ 4097040	/ 630 m	Km 26,0
14.End point	362210	/ 4098130	/ 485 m	Km 28,1





**Variante 4**  
**Etapa 1**  
**GR 249**