

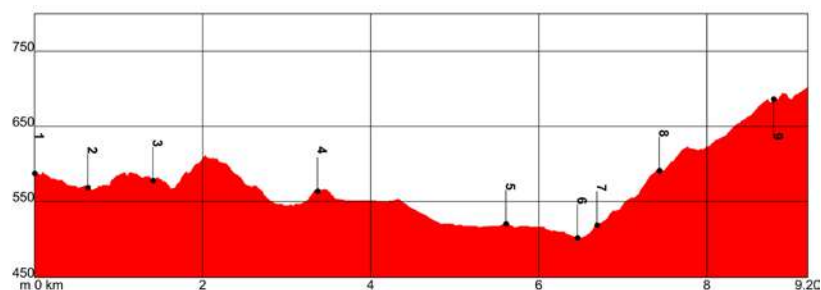


Arriate (NW) (590m) Ronda (N) (700 m)

9.2 km 2 h 30 min. 295 m 170 m Linear

On foot 3.7 km 3.6 km 1.9 km

Environment hazards 1 2 3 4 5 Underfoot Conditions 1 2 3 4 5
 Navigation 1 2 3 4 5 Physical Effort 1 2 3 4 5



- Road traffic circulating on tarmac sections
- Wading through the River Guadalcobacín at km 6.5
- Level crossing without barriers at km 6.7

PR-A 250

GR 7 E4

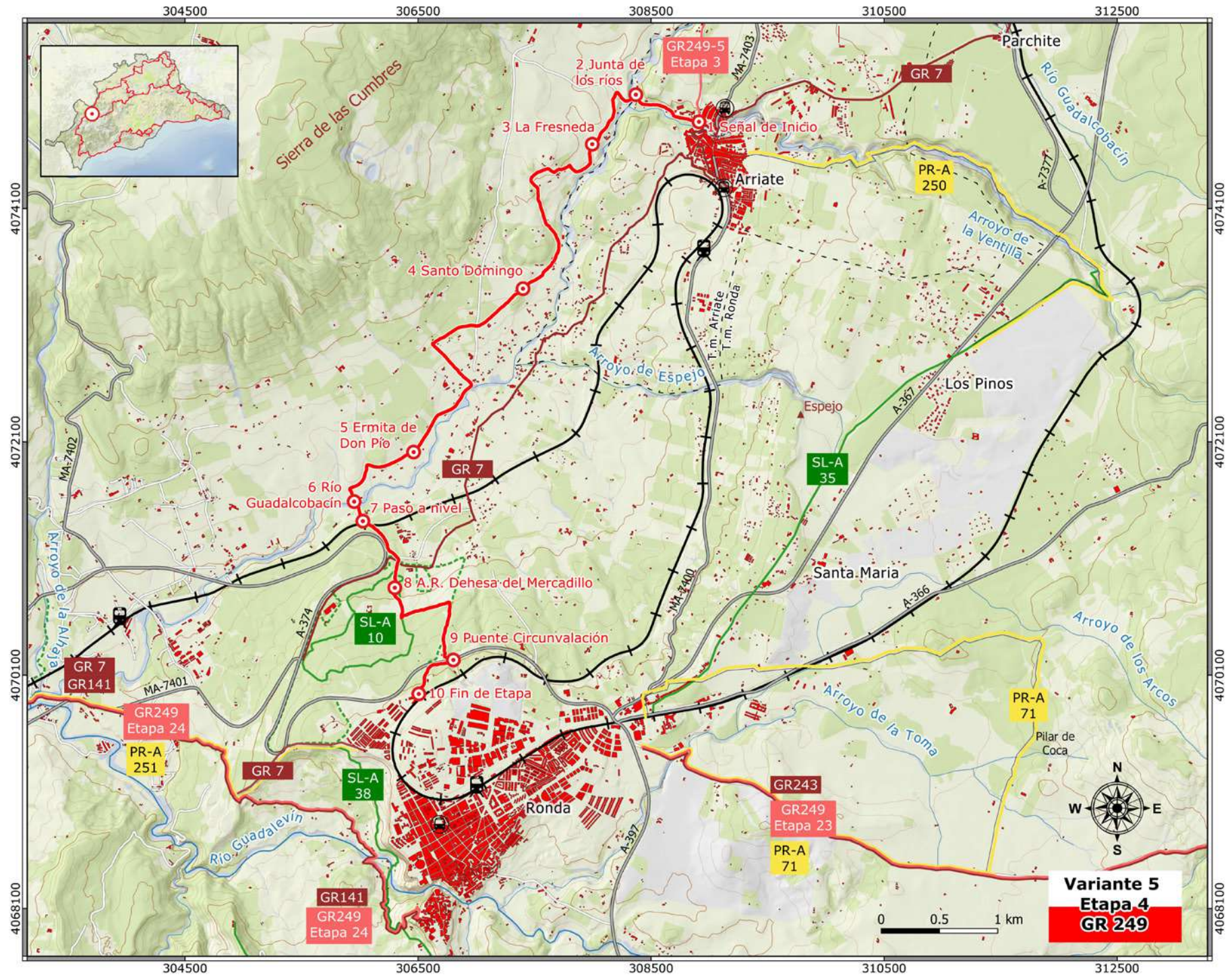
SL-A 10

From Arriate to Ronda, link up at start

Tarifa to Athens, crosses Stage 3 at km 7

The Profesor Paco Marín Path, partial overlap

P O I N T	X	Y	HEIGHT ABOVE SL	DISTANCE
1. Sign at starting point	308910	4074845	590 m	Km 0.0
2. Confluence of rivers	308370	4075080	570 m	Km 0.6
3. La Fresnada	307995	4074650	580 m	Km 1.4
4. Santo Domingo	307400	4073415	570 m	Km 3.4
5. Chapel-shrine of Don Pio	306460	4072015	520 m	Km 5.6
6. River Guadalcobacín	305950	4071590	500 m	Km 6.5
7. Level crossing	306030	4071420	520 m	Km 6.7
8. Rec. Area Dehesa del Mercadillo	306300	4070850	590 m	Km 7.4
9. Bridge over the ringroad	306800	4070230	680 m	Km 8.8
10. End of the Stage	306505	4069940	710 m	Km 9.2



Variante 5
Etapa 4
GR 249