



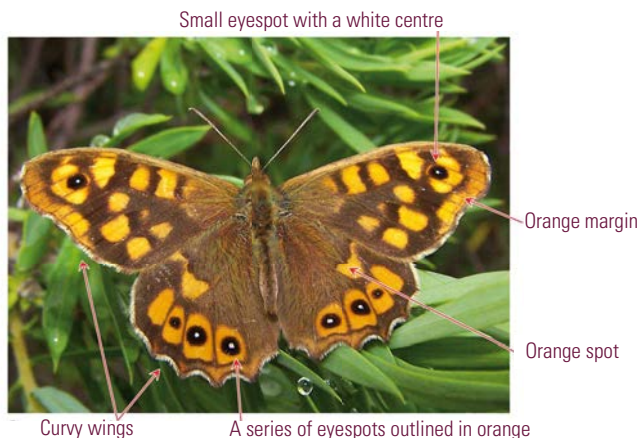
Speckled Wood

Pararge aegeria (Linnaeus, 1758)

DESCRIPTION

Wingspan: From 3.5 to 4.4 cm. Both wings are curvy though the sinuous outlines are more prominent on the hindwing. **Open wings:** They are mostly brown with some scattered orange spots. On the forewing, there is a small eyespot with a white centre on the apex. Orange margins stretch from the apex to the proximity of the anal angle. On the hindwing, an orange spot spreads to the middle of the wing, above the series of eyespots. **Closed wings:** The hindwing is covered in different shades of brown. There is a series of white spots outlined in vague brown which represent traces of eyespots.

KEY FOR VISUAL IDENTIFICATION



SIMILAR SPECIES

Large Wall Brown: The wings outlines are not sinuous. When it stretches the wings, there is a big eyespot on the forewing apex, a smaller one next to it, and one more close to the apex. The section of margin between the apex and the anal angle is brown. On the hindwing, there is no long orange dot over the series of eyespots. When its wings are closed, they are silver grey. There is a series of black eyespots with concentric rings. **Wall Brown:** The wings outlines are not sinuous. All wings are more covered in orange than in brown colour. The section of forewing margin between the apex and the anal angle is brown. An orange spot, placed over the series of eyespots, goes across the entire hindwing. When its wings are closed, they are grey. There is a series of black eyespots with concentric rings.



Large Wall Brown



Wall Brown

BIOLOGY & HABITAT

Several generations fly throughout the year at the same time. It is more common from March to July. Recently emerged butterflies can be seen on warm winter days. This species lives in all kinds of habitats covered in plants, above all away from sunny zones, in shady areas, dense forests, such as eucalyptus woods, river banks with trees, streams and cattle tracks. Its caterpillars feed on diverse grasses, such as the genus *Elymus*, *Brachypodium*, *Poa* or *Dactylis*.

Jan	Feb	Mar	Apr	May	Jun	Jul	Aug	Sep	Oct	Nov	Dec
-----	-----	-----	-----	-----	-----	-----	-----	-----	-----	-----	-----

DISTRIBUTION

This species can be seen all along the GMP, although, on the coast and in the north of the province, it is scarcer and limited to specific places.

